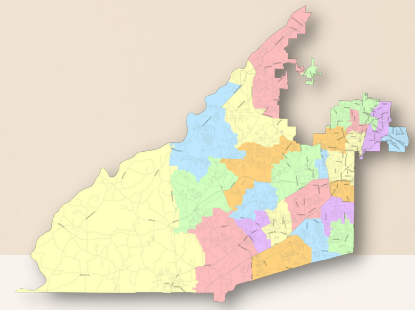


# Community Engagement and the Redistricting Process



FALL 2023/WINTER 2024

## SOUTH FULTON ELEMENTARY SCHOOLS

As promised by the one-penny sales tax for education (ESPLOST), a new S.L. Lewis Elementary School is being built to replace its aging facility. The future opening of this school provides an opportunity to balance enrollments among South Fulton elementary schools through redistricting and/or consolidation.

A successful redistricting effort not only involves the community but also helps stakeholders understand why and how decisions are made. During several upcoming forums in October and November, participants will review the School Board's redistricting criteria outlined below and can comment on these and other issues relevant to the criteria used for redrawing attendance lines.

### School Board-Approved Criteria for Developing Redistricting Proposals

*Excerpt from Fulton County School Board Policy AD: "School Attendance Zones"*

#### PRIMARY CRITERIA

##### **Geographic Proximity**

Distance traveled using available routes of transportation.

##### **Instructional Capacity**

Number of students who can be accommodated at the school, taking into account the number of classrooms and rooms needed for art, music, labs, ESOL, special education, and Talented and Gifted (TAG) programs.

##### **Projected Enrollment**

Number of students assigned to a school, taking into account the future projected enrollment.

#### SECONDARY CRITERIA

When primary criteria indicate more than one option, options are evaluated on:

##### **Traffic Patterns**

Factors impacting accessibility of the school from all portions of the attendance zone, including travel time, traffic flow in the area, safe operation of school buses, and other safety considerations.

##### **Previous Rezoning**

The school system seeks to avoid rezoning neighborhoods more than once during a 3-year period if facility sizes and geographic distribution of student populations allow.

##### **Special Programs**

Special programs are those serving children with special needs that require use of additional space over and above a regular classroom. Where possible, the district avoids setting attendance zones that would place a disproportionate number of special programs at a school.

##### **School Feeder Alignment**

Where possible, consideration is given to the alignment of elementary, middle and high school attendance boundaries.

[www.fultonschools.org/redistricting](http://www.fultonschools.org/redistricting)

Fulton County Schools • 6201 Powers Ferry Road NW • Atlanta, Georgia 30339

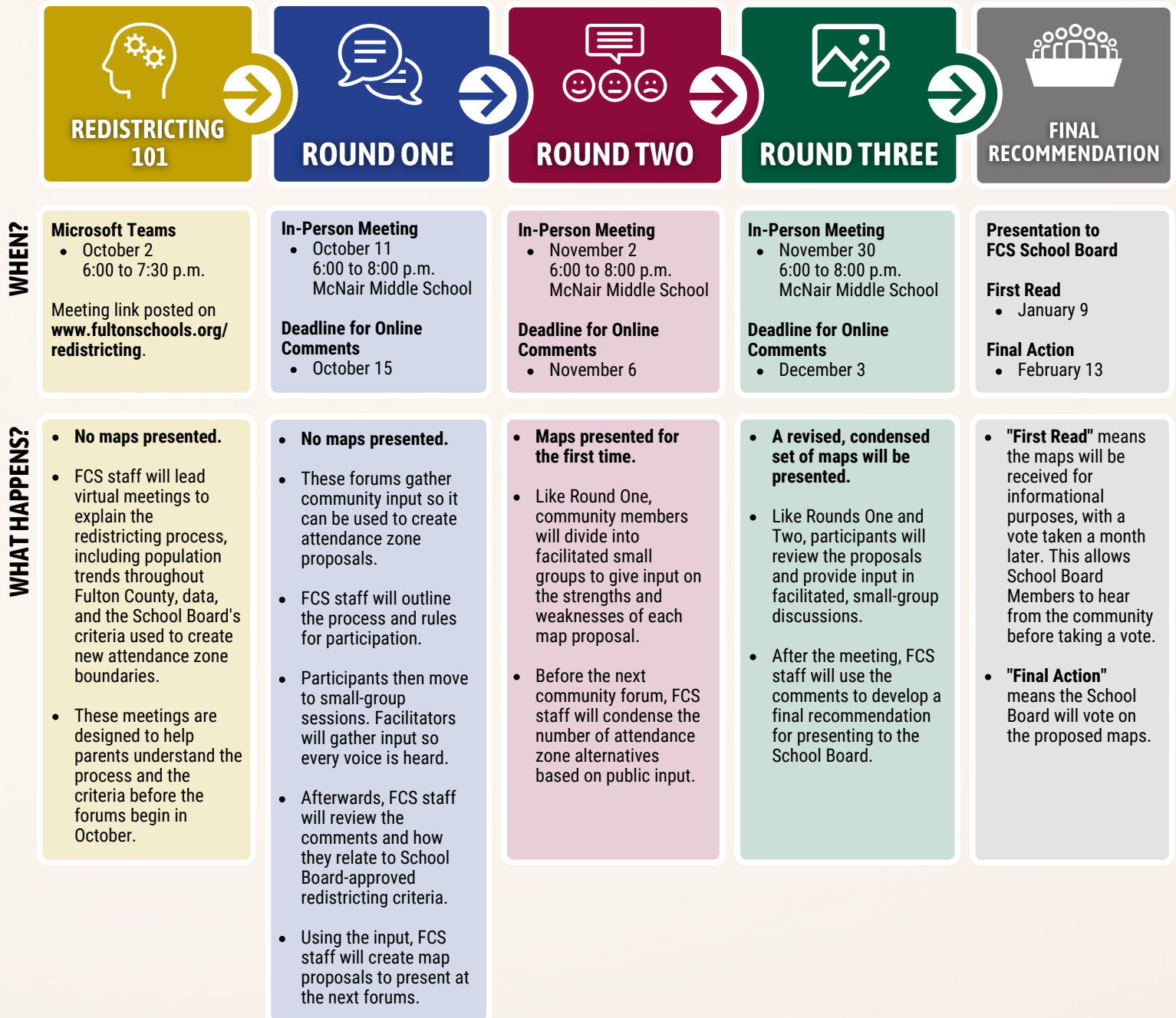
Version COMM2023v1

# Opportunities for Input and Feedback



Fulton County Schools values and encourages public input regarding new school attendance zones. In addition to feedback gathered at these community forums, comments can be mailed and/or emailed to:

Fulton County Schools c/o Operational Planning Department  
6201 Powers Ferry Road NW, Atlanta, GA 30339  
planning@fultonschools.org



[www.fultonschools.org/redistricting](http://www.fultonschools.org/redistricting)

Fulton County Schools • 6201 Powers Ferry Road NW • Atlanta, Georgia 30339

Version COMM2023v1